

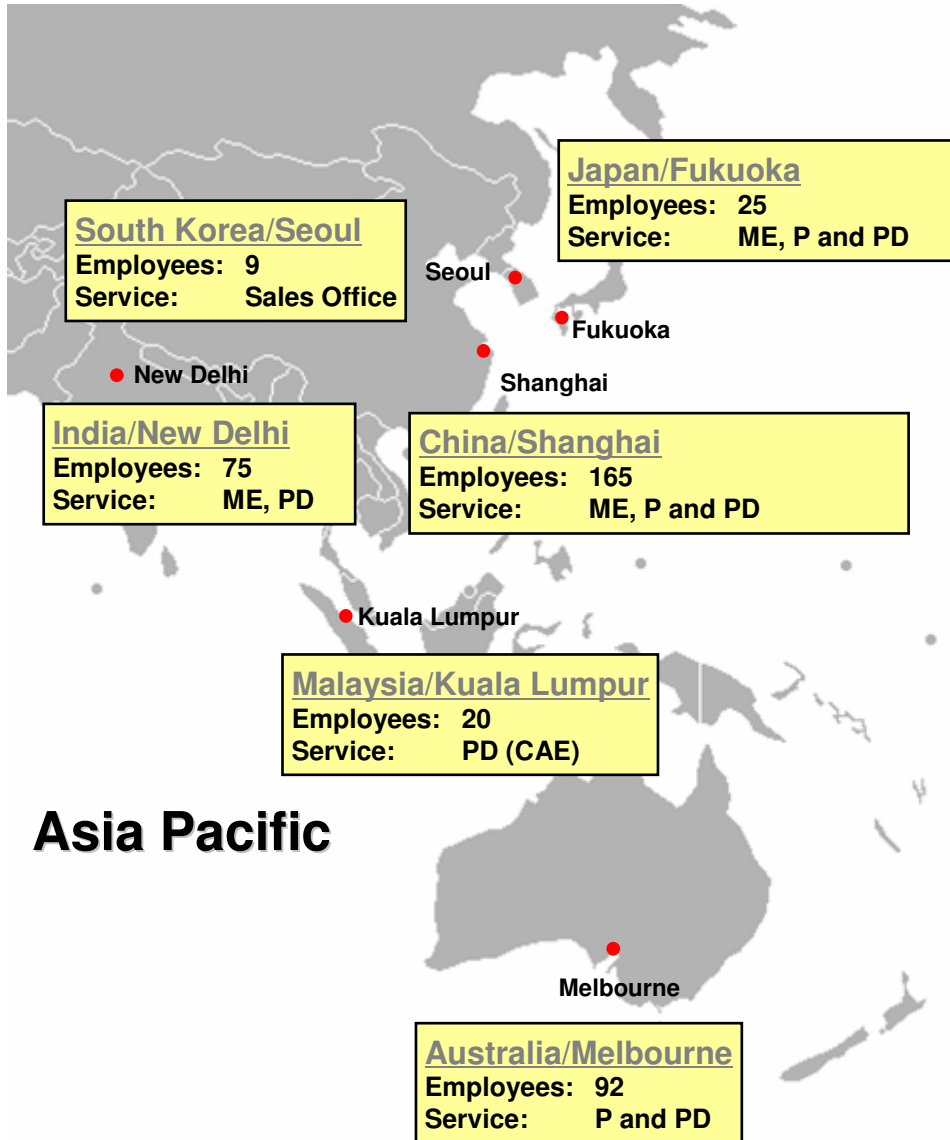
EDAG Japan Co., Ltd.



Company Overview



EDAG in Japan and Asia Pacific



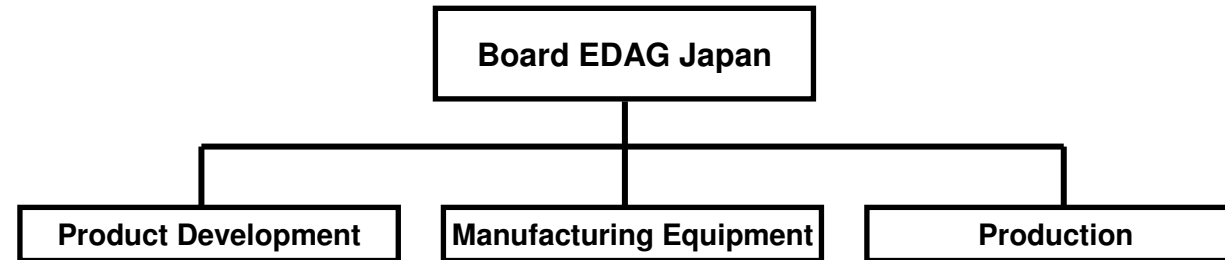
Japan



- **Company Name:** EDAG JAPAN Co., Ltd.
- **Established:** 2006-Feb-21
- **Director** Manfred Glotzbach
- **Capital** 103,000,000 JPY
- **Employees** 25
- **Address:**
 - Headquarters
16th Okabe Bldg.,
8-27 Hakataeki Chuogai,
Hakata-ku, Fukuoka 812-0012
Japan
 - Yokohama Office
Within the premises of AES Cp., Ltd.
Yokohama Hanasaki Bldg.
6-146 Hanasaki-cho, Nishi-ku,
Yokohama-shi 220-0022 Japan

- **Main Services:**
 - Product Development
 - Manufacturing Equipment
 - Production

- **Overseas Affiliates** http://www.edag.co.jp/Company/edag_worldwide/locations/



2005	May	Opening of EDAG Sales Office in Fukuoka
	September	Partnership with Topia Co., Ltd.
	October	EDAG participates in the Tokyo Motor Show in cooperation with VDA (Verband der Automobilindustrie)
2006	January	ATON-Group joins in as main shareholder of the EDAG-Group
	February	Foundation of EDAG Japan Co., Ltd.
		First Vehicle Development project starts at OEM
	June	Start of "Joint Innovation Project" for Body Development and Laser Technology with Japanese OEM
	November	First production cell is handed over to customer
2007	June	Joint Truck Development project with EDAG subsidiaries
	July	Joint Vehicle Development project with EDAG subsidiaries
	August	"Wheel Arch" and "Back Door" hemming production cell development for two Japanese automotive manufacturers
2008	February	EDAG Japan has 25 employees (worldwide approx. 5500 employees)
		Truck Development project with Japanese manufacturers

■ Portfolio

■ **Vehicle Concepts**

- Package / DMU
- Research and Development
- Innovation

■ **Body Engineering**

- Body-In-White
- Hang-On-Parts
- Interior / Exterior
- Trim / Cockpit

■ **Project Management**

- Planning and Organizing
- Scheduling and Compliance
- Development Process Control

■ Local Capacities and Team Size

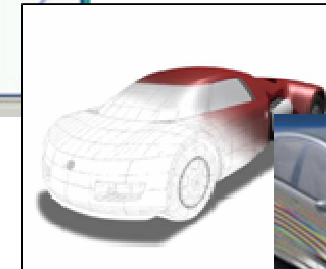
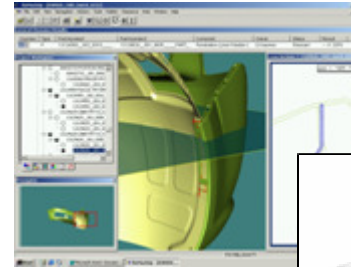
■ **12 Design Engineers**

■ **Body Engineering, Hang-On-Part, Interior, Exterior, CAE**

■ References

■ **Japanese / Overseas Car Manufacturer – Body-In-White support**

■ **Japanese / Overseas Truck Manufacturer – Cabin-In-White support**



■ Innovative Concepts

- Rear Seat UMPC Infotainment System (UMPC Integration)
- Mobile Consumer Device Integration
- HMI Device Development

■ Portfolio

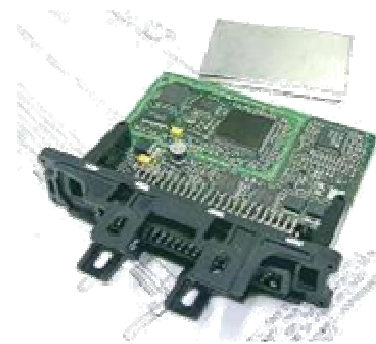
- Test & Validation
 - HW/SW and Component Validation
- Benchmark
 - System and Component Benchmark
- Vehicle Electrics
 - Design and Integration of E-Components
- System Design and Integration
 - Development Coordination
 - Diagnosis Tools
 - Control Units

■ Local Capacities and Team Size

- 2 Engineers
- Test & Validation, Benchmark, Development Coordination, Diagnosis Tools

■ References

- German and European OEM's and suppliers



■ Innovative Products

- EDAG Roller Hemming
- EDAG Laser Technology
- EDAG Vision Systems

■ Portfolio

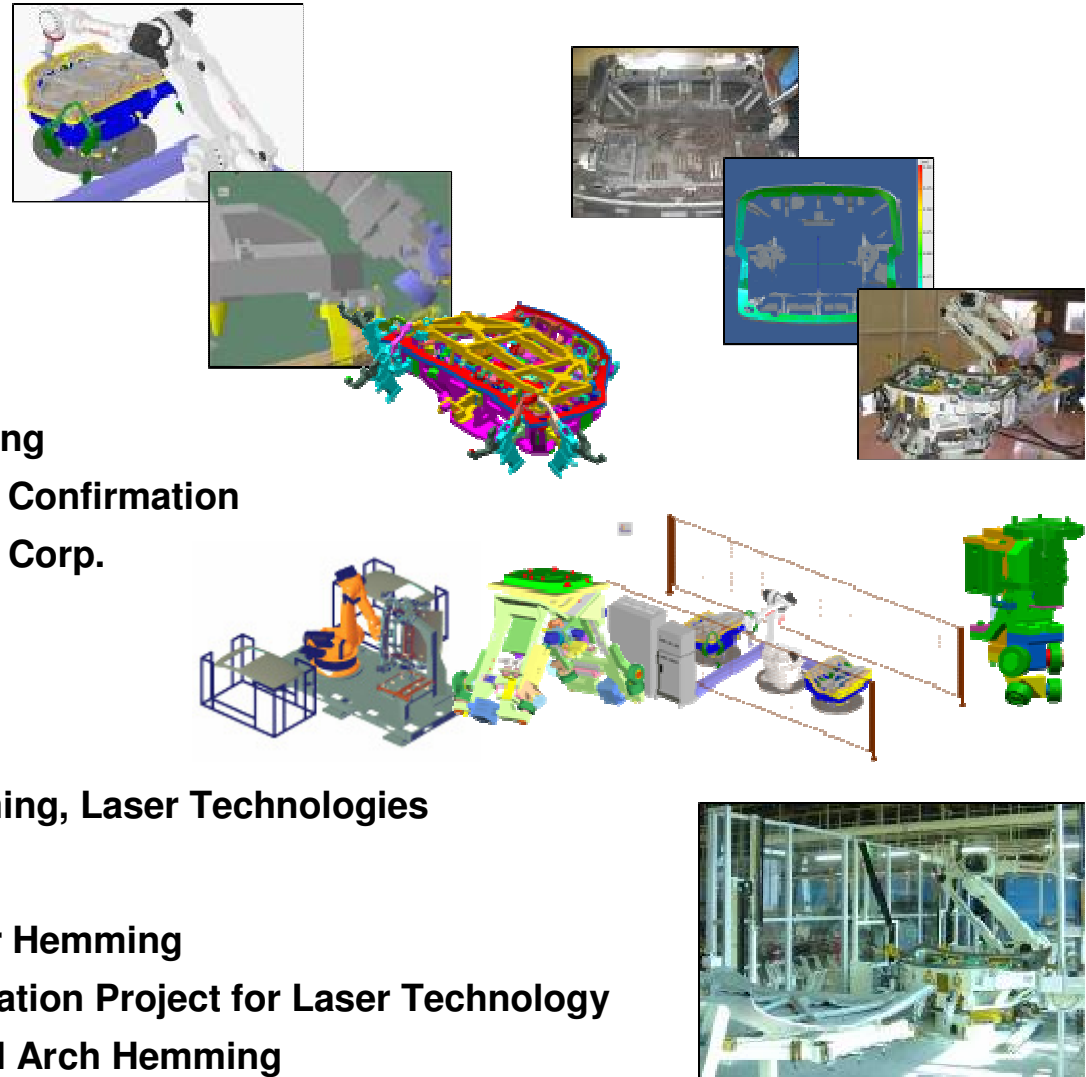
- Production Engineering BIW
- Planning and Concepts
- Mechanical and Electrical Engineering
- Simulation and Virtual specification Confirmation
- Hardware in cooperation with Topia Corp.
- Commissioning and Ramp up

■ Local Capacities and Team Size

- 6 Engineers
- Roller Hemming, Wheel Arch Hemming, Laser Technologies

■ References

- Japanese Car Manufacturer – Roller Hemming
- Japanese Car Manufacturer – Innovation Project for Laser Technology
- Japanese Car Manufacturer – Wheel Arch Hemming



■ Worldwide Activities

- Exclusive partner for Japanese companies for overseas businesses:
(Prototyping business from Japan)

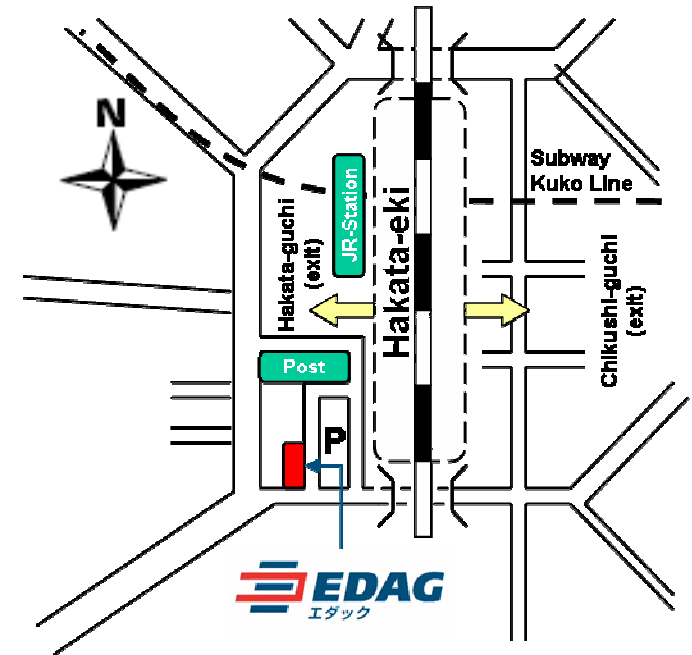
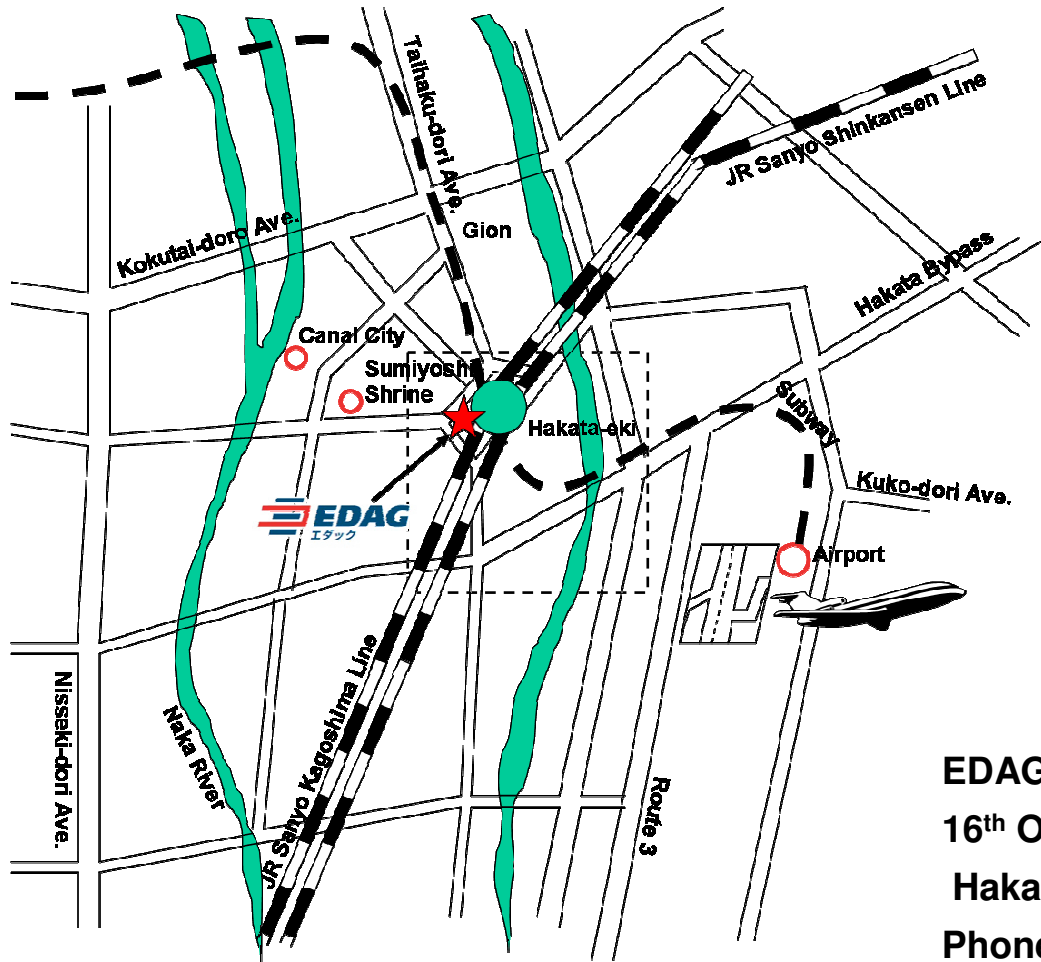


■ Support in generating business in Japan

- Representative office for German companies
- Support in set-up of office and business

- Toyota Motor Corporation
- Toyota Motor Kyushu, Inc.
- Daihatsu Motor Co., Ltd.
- Nissan Motor Co., Ltd.
- Mazda Motor Corporation
- Mitsubishi Fuso Truck and Bus Corporation
- BMW Japan Corp.
- Ford Motor Company of Australia Limited
- General Motors do Brasil Ltda.
- Volkswagen do Brasil - Indústria de Veículos Automotores Ltda.
- Baotou Beifang Benchi Heavy-Duty Truck Co., Ltd.
- SAIC Motor Corporation Limited
- Marquardt GmbH
- Topia Co., Ltd.
- AES Co., Ltd.

Location



EDAG Japan Co., Ltd.

**16th Okabe Bldg., 8-27 Hakataeki Chuogai,
Hakata-ku, Fukuoka, 812-0012 Japan**

Phone: +81-92-452-7180

Fax: +81-92-481-1780

Board: Manfred Glotzbach